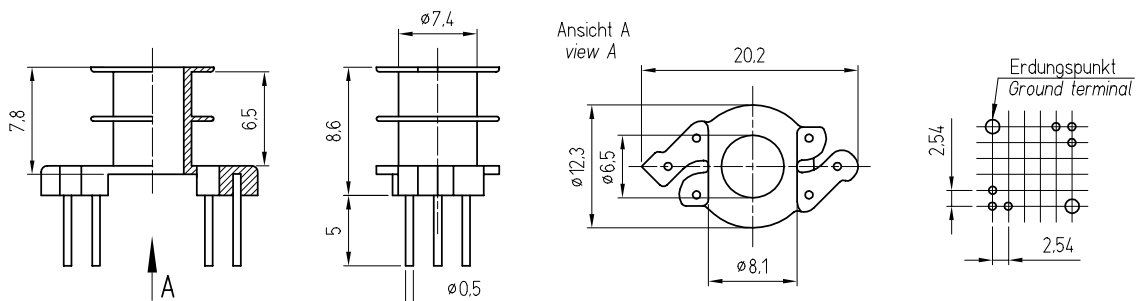


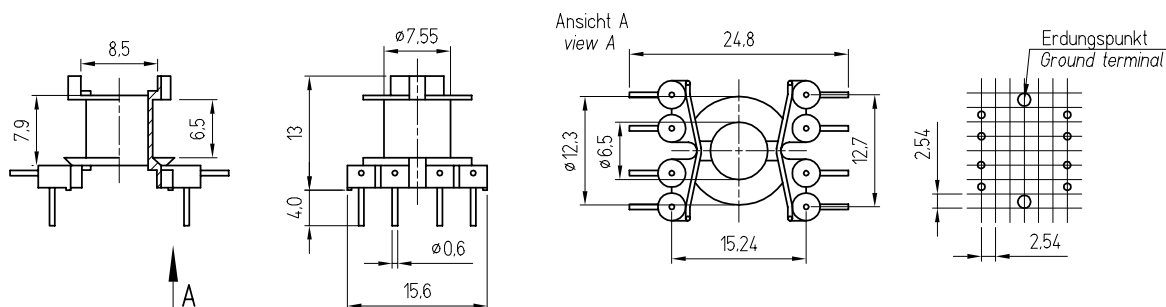


Spulenkörper - nicht-lineare Stiftanordnung  
Coilformer - non linear pin arrangement



	Bezeichnung / description	
	SP - RM 6 - 1070	SP - RM 6 - 1488
Kammerzahl / no. of sections	1	2
$A_N$ in mm <sup>2</sup>	15,9	14,7
$l_N$ in mm	31,0	31,0
max. Stiftzahl / max. no. of pins	6	6
Standardmaterial / standard material	Phenolharz / phenolic resin	
	Applikationsbeispiel / application example	

Spulenkörper - lineare Stiftanordnung  
Coilformer - linear pin arrangement



	Bezeichnung / description	
	SP - RM 6 - 1542	
Kammerzahl / no. of sections	1	
$A_N$ in mm <sup>2</sup>	15,6	
$l_N$ in mm	31,2	
max. Stiftzahl / max. no. of pins	8	
Standardmaterial / standard material	Polybutylenterephthalat / polybutyleneterephthalate	
	Applikationsbeispiel / application example	